



ALUS 無橫向拉紋鋁用銑刀系列

SUS No Machine Mark End Mill For Aluminum Series

ALUS



特點

SPECIAL FEATURES

- 採用雙刀刃設計，去屑快，加工鋁件更俐落!!
Dual blades shape design, remove aluminum chips faster than normal type.
- 獨有的拋光刃口與平整的刀刃，完全實現加工無橫向拉痕。
Unique polished process leads the work piece with no lateral marks milling result.
- 專為表面要求高光亮的鋁件加工所設計。
Designed for all aluminum work piece with better surface demand.

粗精加工
皆可



實際測試影片

實績測試

Benchmark test:

ALUS-3EN-D10

機台 Machine: CAMPRO- By Coolant

工件 Work Piece: ALUMINUM -6061 (HRC 25)

轉速 Spindle Speed: 7600 RPM

進給 Feed Rate: 1000 mm/min

單刃切削量 Feed Rate Per tooth: 0.05mm

深度 Depth: 1.5D

寬度 Width: 0.1mm

切削方式 Milling Method: 側銑 Side milling

Lateral scratch Testing result

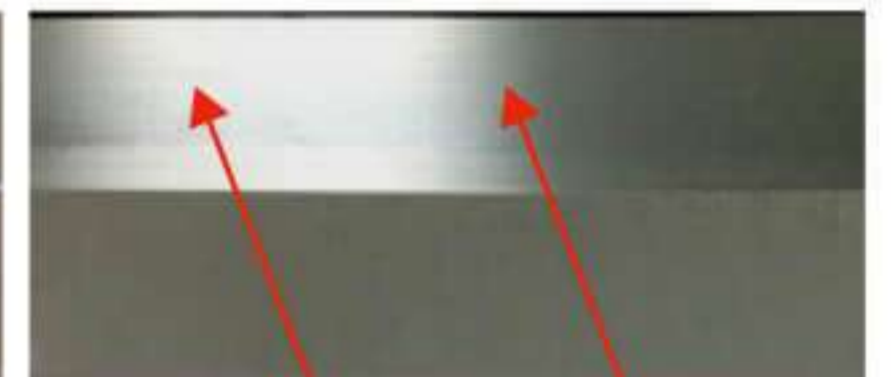
橫向拉痕測試

ALUS- NO SCRATCH

Work piece

他社

NG-WITH SCRATCH



Scratch mark

ALUS-3EN-D10

機台 Machine: CAMPRO- By Coolant

工件 Work Piece: ALUMINUM -6061 (HRC 25)

轉速 Spindle Speed: 9000 RPM

進給 Feed Rate: 3500 mm/min

單刃切削量 Feed Rate Per tooth: 0.05mm

深度 Depth: 2D

寬度 Width: 4mm

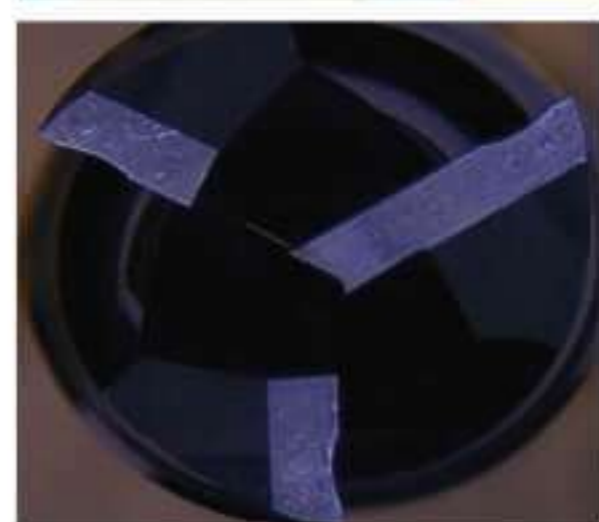
切削方式 Milling Method: 溝側銑 Slot / Side milling

LIFE TIME Test

ALUS

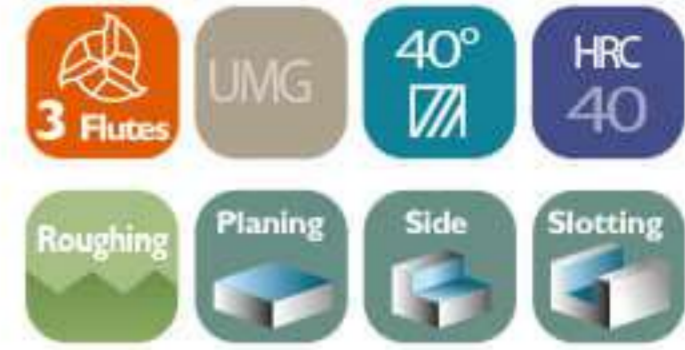
他社

ALUS-1010



ALUS 無橫向拉紋鋁用銑刀

SUS No Machine Mark End Mill For Aluminum



規格表

編號 (Number)	外徑 (D)	刃長 (H)	刃數 (T)	柄徑 (d)	全長 (L)	價格 (Price)
ALUS0204	2	6	3	4	50	
ALUS0304	3	9	3	4	50	
ALUS0404	4	12	3	4	50	
ALUS0206	2	6	3	6	50	
ALUS0306	3	9	3	6	50	
ALUS0406	4	12	3	6	50	
ALUS0506	5	15	3	6	50	
ALUS0606	6	18	3	6	50	
ALUS0808	8	24	3	8	60	
ALUS1010	10	30	3	10	75	
ALUS1212	12	36	3	12	75	
ALUS1616	16	50	3	16	100	
ALUS2020	20	55	3	20	100	

切削條件表

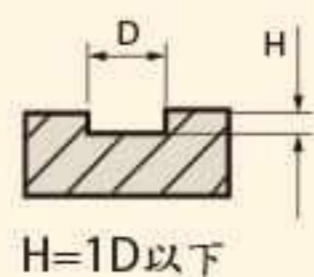
Recommended Milling Conditions

切削條件	粉末微粒碳化鎢 3刃立銑刀 ALUS	被切削材	鋁合金 -all the Aluminum type	被切削材 硬度	HRC20-30
------	-----------------------	------	----------------------------------	------------	----------

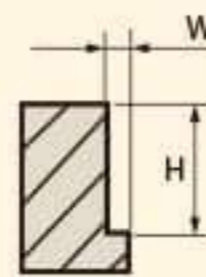
立銑刀刀徑 mm	轉速-spindle speed RPM	進給-feed rate mm/min	立銑刀刀徑 mm	轉速-spindle speed RPM	進給-feed rate mm/min
D3.0	10500	1200	D3.0	10500	1200
D4.0	8000	1100	D4.0	8000	1100
D5.0	9500	1700	D5.0	9500	1700
D6.0	9500	1700	D6.0	9500	1700
D8.0	8000	2300	D8.0	8000	2300
D10.0	8000	2800	D10.0	8000	2800
D12.0	6600	2400	D12.0	6600	2400
D16.0	5000	1800	D16.0	5000	1800
D20.0	4000	1400	D20.0	4000	1400

最大切削量 / Max Cutting Range.

Slot Milling- below 1D depth.



最大切削量 / Max Cutting Range.



Depth= H is within 2D
W= 0.2D